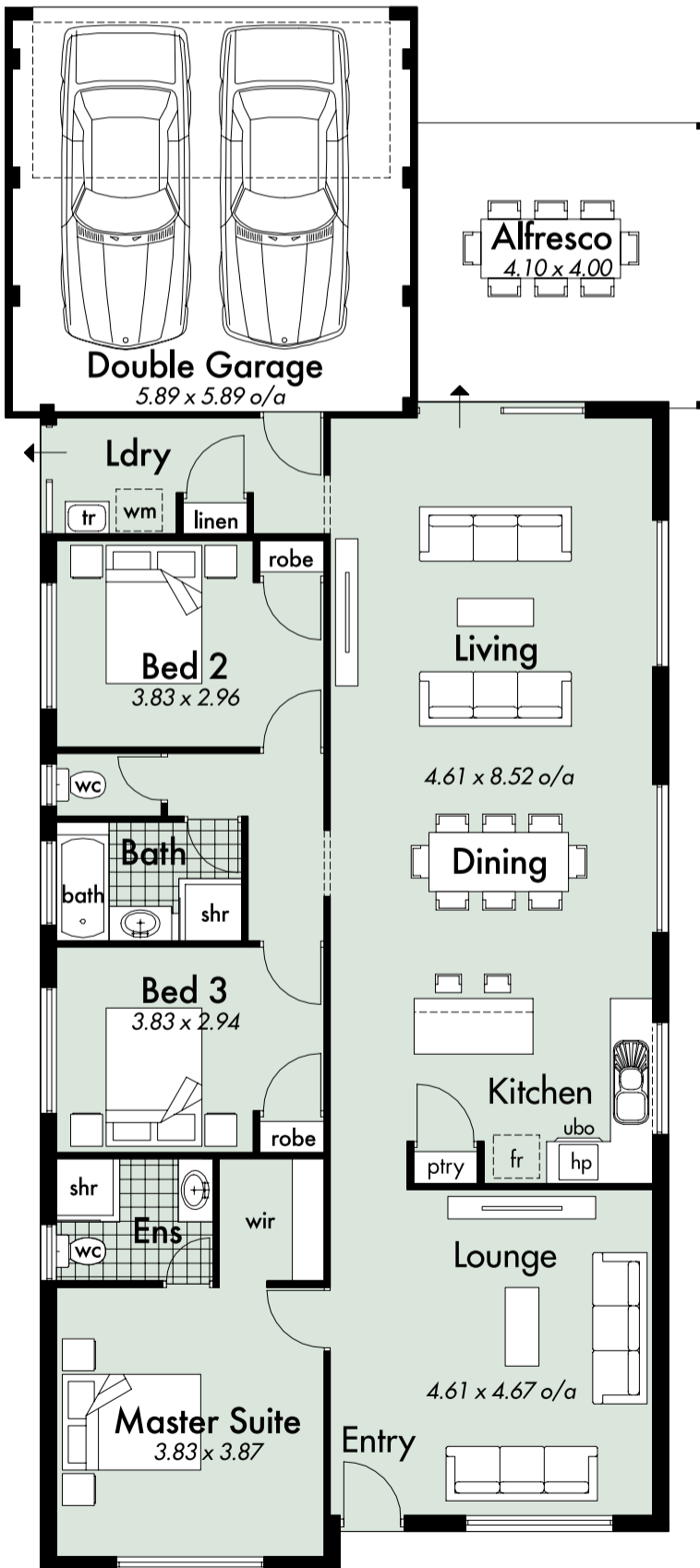


OPTION 1



STANDARD



## My Aspire

House area	147.38 m <sup>2</sup>
Garage area	34.19 m <sup>2</sup>
Alfresco area	16.45 m <sup>2</sup>
Total area	198.02 m <sup>2</sup>
Perimeter	51.56 m
House width	9.99 m
House depth	22.45 m





## My Domain - Aspire

# Freedom Specification

### General

- 1 Double garage with grano hardstand and remote sectional garage door including two handsets or double carport with posts as shown and brickpaved hardstand
- 2 Brickpaving to all external areas under main roof plus a generous allowance for drive and paths
- 3 R3.0 roof insulation
- 4 Double clay brick construction
- 5 Extensive choice of clay face bricks from builder's selected range
- 6 Concrete roof tiles from builder's selected range
- 7 Cream or natural mortar with raked, rolled or hose joints
- 8 Quality aluminium sliding windows and doors with a choice of colours
- 9 Flyscreens to sliding windows and sliding doors
- 10 Keyed boltlocks to aluminium sliding doors
- 11 Breezelocks to sliding windows
- 12 Designer range of entry door/s with double deadlock
- 13 Deluxe profile metal door jambs
- 14 Built-in/walk-in linen cupboard where shown
- 15 Built-in/walk-in robes where shown
- 16 MDF cappings to dwarf walls where shown
- 17 Two smoke detectors direct wired to mains
- 18 Designer light switches matt silver with black inserts
- 19 One designer single power point to all habitable rooms
- 20 Electrical safety switch to mains
- 21 Quality door furniture
- 22 Large capacity instantaneous hot water system
- 23 Garden taps to front and rear
- 24 Stormmaster gutters which prevent overflow into eaves
- 25 Fully painted to the colour of your choice, excluding internal walls
- 26 Full connection to sewer within 6 metres of last fixture
- 27 Obligation free, detailed site appraisal
- 28 Fixed price contract
- 29 6 month Maintenance Agreement
- 30 Engineer designed concrete footings and floor slab
- 31 Feature contour of your block
- 32 All standard shire and water fees included
- 33 Professional consultants to advise on building queries

### Kitchen

- 34 Generous pantry with white lined shelving
- 35 Quality kitchen cupboards with white lined shelving
- 36 Quality 1¾ bowl stainless steel sink
- 37 Quality mixer tap to kitchen sink
- 38 Roller tracks to all kitchen drawers
- 39 Quality stainless steel gas hotplate
- 40 Quality stainless steel electric wall oven

### Bathrooms/Laundry

- 41 Generous allowance for ceramic wall and floor tiles
- 42 1800 high tiling to showers with screens and mirrors to match
- 43 Floor tiles to bathroom and ensuite
- 44 Exhaust fan to ensuite and kitchen
- 45 Mirrors with trim above all vanities
- 46 Privacy locks to bathrooms and wc
- 47 Vanity cupboards under vanity tops, fully lined
- 48 Quality acrylic bath
- 49 Quality basins
- 50 Colour coordinated taps and outlets
- 51 Automatic washing machine taps
- 52 Quality dual flush acrylic toilet cisterns
- 53 45 litre stainless steel sudsaver trough with coloured cabinet
- 54 Double towel rails and toilet roll holders



**Perth** 34 Burton Street Cannington  
Ph 9333 4000 Fx 9258 4088

**Bunbury** Homemaker Centre  
Unit 6, 42 Strickland Street  
Ph 9780 9300 Fx 9780 9399

**Geraldton** 12 Bayly Street,  
Batavia Coast Marina,  
Ph 9921 8835 Fx 9921 8836

[www.mydomainhome.com.au](http://www.mydomainhome.com.au)

Builder's Reg. No. 7995