

Ben Leitch

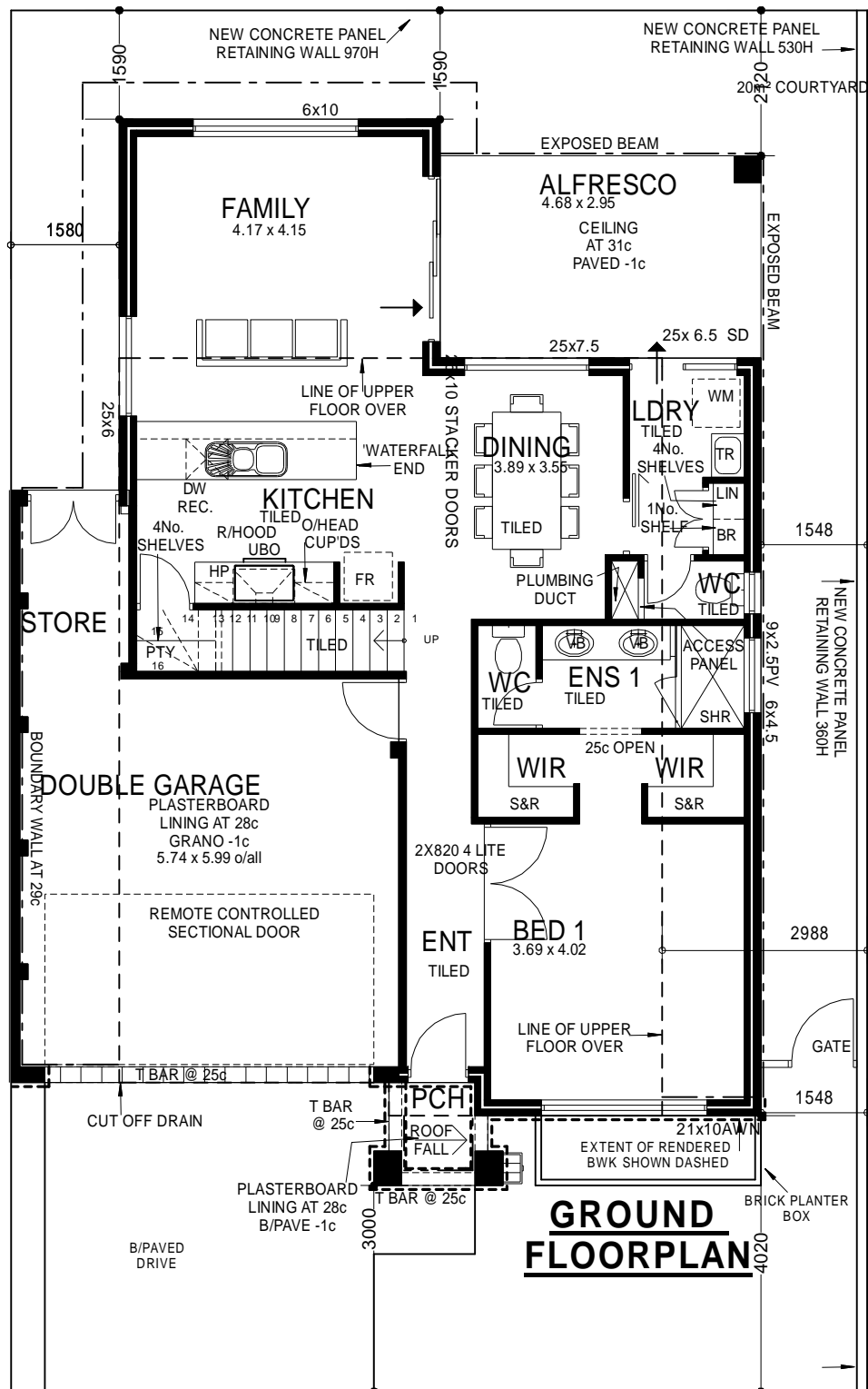
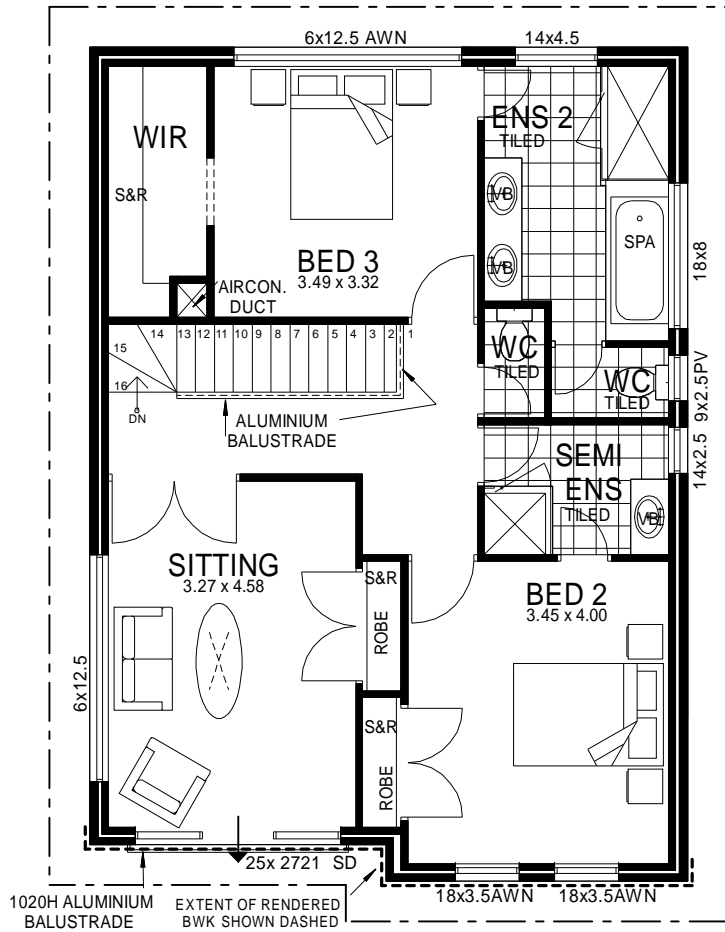
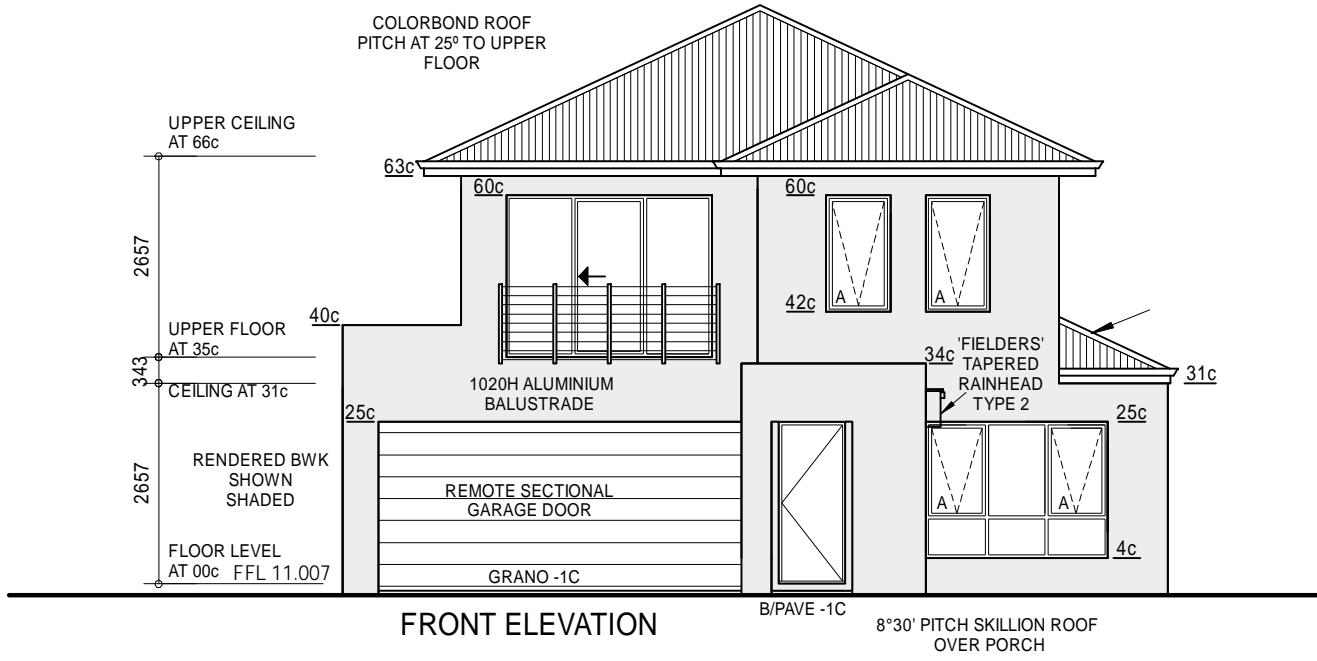
Narrow & Small Lot Specialist

0417 355 586

9333 4056

leitchb@plunketthomes.com.au

narrowlothes.com.au



LOT 4

GROUND FLOOR	92.58m ²
GARAGE/STORE	37.78m ²
ALFRESCO	13.81m ²
PORCH	2.58m ²
GROUND TOTAL	146.75m ²
PERIMETER GROUND FLOOR	47.72m
UPPER FLOOR	85.36m ²
PERIMETER UPPER FLOOR	37.88m
UPPER TOTAL	85.36m ²

SINCE 1903



PLUNKETT
homes

A DIVISION OF
PLUNKETT HOMES (1903)
PTY LTD
34 Burton Street
Cannington WA 6107
PO Box 379
Victoria Park WA 6979
Ph 9333 4000
Fx 9258 4088
www.plunketthomes.com.au
REG 7995
ABN 98 009 250 373

THIS DOCUMENT IS COPYRIGHT AND MAY NOT BE REPRODUCED BY ANY MEANS WITHOUT WRITTEN PERMISSION.