

Please note: Specifications, plan and elevation correct at time of printing but subject to change without notice. All images for illustration purposes only.

The Freedom Specification – The Wordsworth

Quality and value for money come as standard.

The Wordsworth
 by Domain Homes

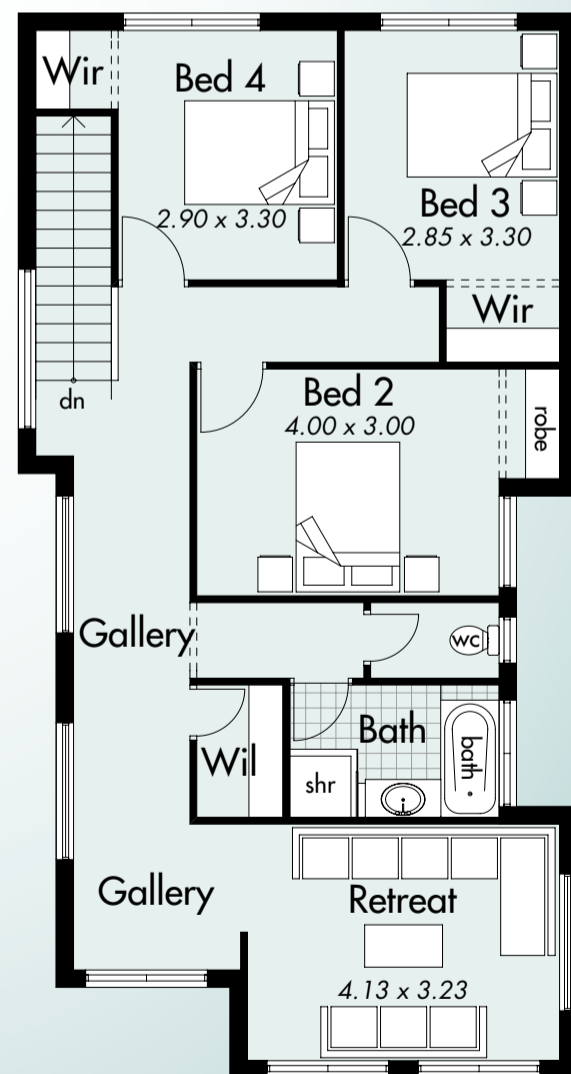
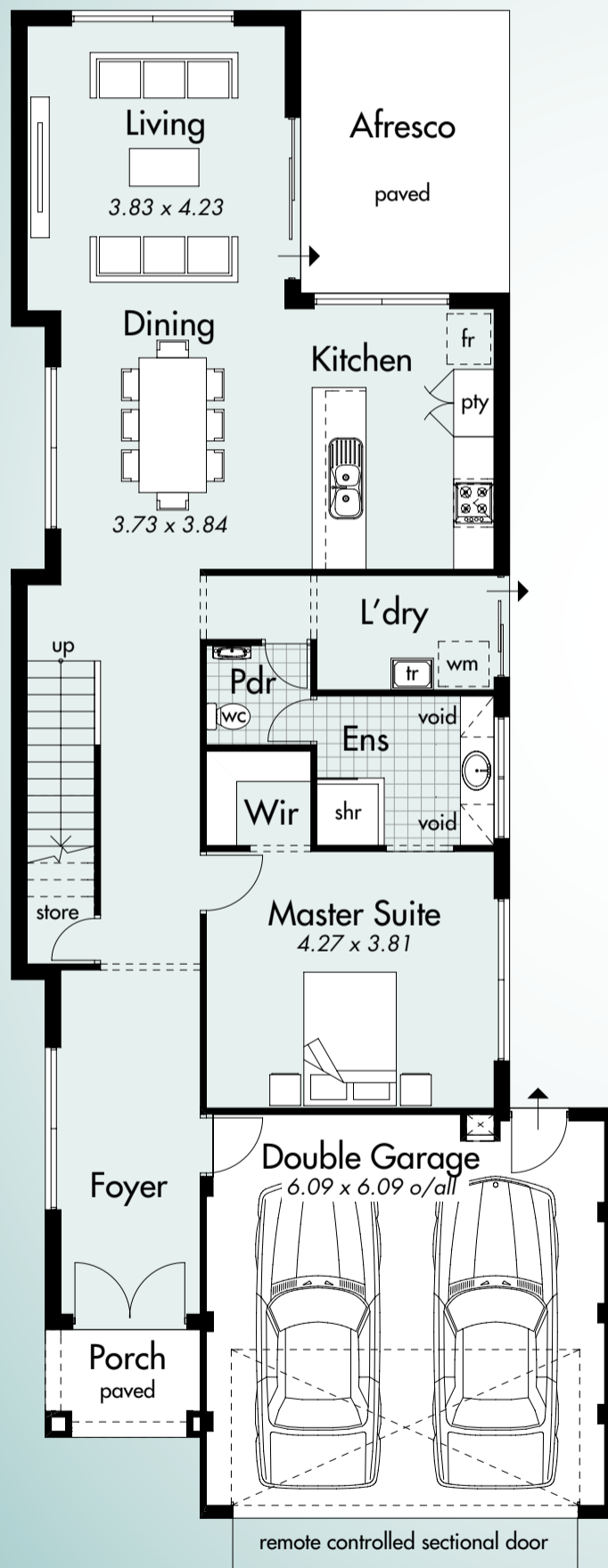
13 Designer range of Entry door/s with double deadlock	14 Deluxe profile metal door jambs	15 Built-in/Walk-in linen cupboard	16 Built-in/Walk-in robes bedrooms as shown	17 Two smoke detectors direct-wired to mains	18 Brushed aluminium designer light switches with black inserts	19 One single power point to all habitable rooms	20 Electrical safety switch to mains	21 Quality door furniture	22 Large capacity instantaneous hot water system	23 Garden taps to front and rear	24 Stormmaster gutter	25 Fully painted to the colour of your choice excluding internal walls	26 Full connection to sewer within 6 metres of last fixture	27 Obligation free detailed site appraisal	28 Fixed price contract	29 Six months Maintenance Agreement	30 Engineer designed concrete footings and floor slab	1 full-height corners excluding reveals	12 Corner beads to all internal	11 Breezlocks to sliding windows	sliding doors	10 Keyed bolts to aluminium sliding doors	9 Flyscreens to sliding windows and doors with a choice of colours	8 Quality aluminium sliding windows and doors with a choice of colours	7 Cream mortar with raked, rolled or hose joints	6 R3.0 roof insulation	5 Concrete roof tiles from Builder's standard range	4 2 course clay face bricks from Builder's standard range	3 Double clay brick construction allowance for drive and path	2 Brickpaving to all external areas and brickpaved hardstand	1 Double garage with grano hardstand and remote sectional garage door including two handsets
31 Feature contour of your block	32 All standard Shire and Water fees included	33 Professional Consultants to advice on building queries	34 Generous pantry with white lined shelving	35 Quality cupboards with white lined shelving	36 Designer 1 1/2 bowl stainless steel sink with end drainer	37 Chrome mixer tap to sink	38 Roller tracks to all drawers	39 Quality stainless steel 600mm gas hotplate and electric oven	40 Generous allowance for ceramic wall tiles	41 Exhaust fan over hotplate	42 Mirrors with trim above all vanities	43 Privacy locks to all Bathrooms and WC	44 Fully lined vanity cupboards beneath vanity tops	45 Quality acrylic bath (White)	46 Quality acrylic basins (White)	47 Quality dual-flush toilet suites (White)	48 Exhaust fan to Ensuite	49 Toilet roll holders and towel rails	50 Generous allowance for ceramic wall and floor tiles	51 Floor tiles to Bathroom and Ensuite	52 1800mm high wall tiling to shower recesses with screens and mirrors to match	53 Quality chrome taps	46 Quality acrylic basins (White)	47 Quality dual-flush toilet suites (White)	48 Exhaust fan to Ensuite	49 Toilet roll holders and towel rails	50 Generous allowance for ceramic wall and floor tiles	51 Floor tiles to Bathroom and Ensuite	52 1800mm high wall tiling to shower recesses with screens and mirrors to match	53 Quality chrome taps	

The Wordsworth by Domain Homes

House Areas

Total area	260.11m ²	Ground Floor	Upper Floor
Perimeter	99.52m	House area	113.04m ²
House width	8.89m	Garage area	36.29m ²
House depth	22.39m	Alfresco area	13.02m ²
		Porch area	3.68m ²
		Perimeter	54.96m
			House area
			94.08m ²
			Perimeter
			44.56m

Welcome to contemporary narrow-lot living. Welcome to the Wordsworth, a two-storey design that masterfully combines form and function to bring you everything you need in a modern family home. On the ground floor, double entry doors open to a spacious foyer, the master suite and a large open plan living, dining and kitchen area that opens onto a covered alfresco. Upstairs there are three secondary bedrooms, all with built in robes, and a gallery that leads to a private retreat.



Visit www.domain-homes.com.au for more information.



The helpful builder