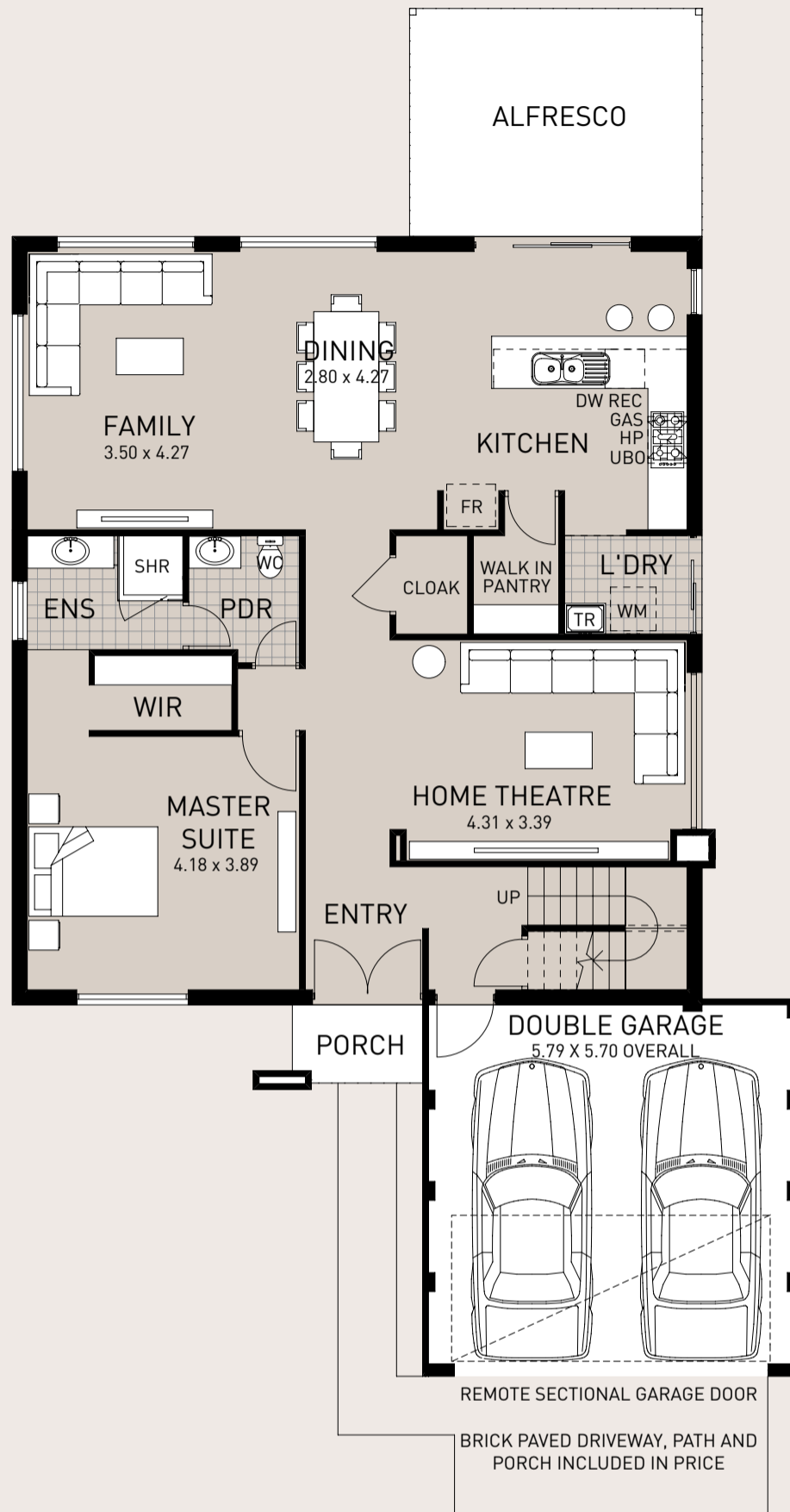




The Hampden

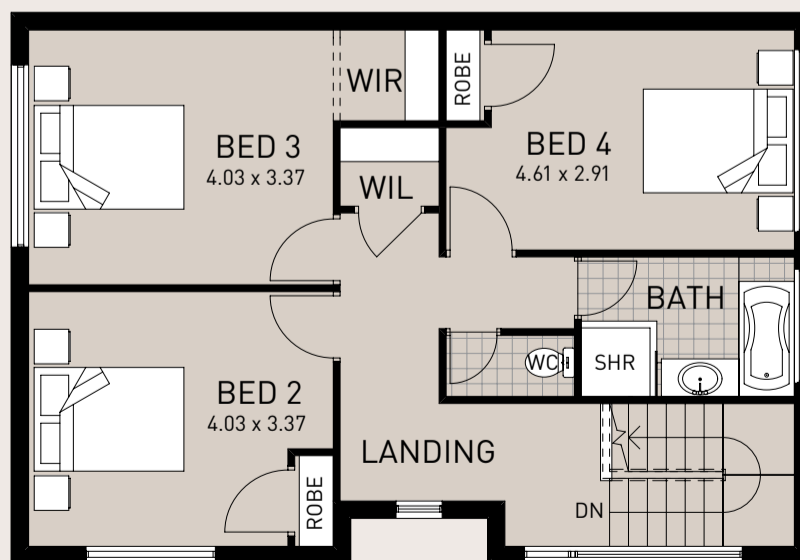
Elegant and functional, the Hampden is a modern family home with an imposing exterior. Step through its double-door doors and beyond the sweeping staircase and you'll find a huge home theatre to the right, and to the left, a spacious master suite. Continue into the home and you're greeted by a large open-plan family/dining and kitchen area that opens up to an alfresco area. Upstairs you'll find the children's bedrooms, all with built-in or walk-in robes, and a second bathroom. The Hampden is everything you want in a family home.



GROUND FLOOR

House Areas

G/F PLAN	124.97m ²
GARAGE	33.14m ²
ALFRESCO	15.72m ²
PORTICO	2.60m ²
TOTAL GF AREA	176.43m²
GF PERIMETER	45.16m
F/F PLAN	76.12m ²
TOTAL FF AREA	76.12m²
FF PERIMETER	36.96m
TOTAL HOUSE AREA	252.55m²
HOUSE WIDTH	12.09m
HOUSE DEPTH	20.99m



FIRST FLOOR

