

Please note: Specifications, plan and elevation correct at time of printing but subject to change without notice.

48 Quality acrylic bath	31 Feature contour of your block	14 Built-in/walk-in linen cupboard	13 Deluxe profile metal door jambs
49 Quality basins	32 All standard shire and water	15 Built-in/walk-in robes where shown	12 Designer range of entry door/s with
50 Colour coordinated taps and outlets	33 Professional consultants to advise on	16 MDF cappings to dwarf walls	11 Breezlocks to sliding windows
51 Automatic washing machine taps	34 Kitchen	17 Two smoke detectors direct wired	10 Keyed bolts to aluminium
52 Quality dual flush acrylic	35 Lined shelving	18 Designer light switches matt silver	9 Flyscreens to sliding windows and
53 45 litre stainless steel sudsaver	36 Quality 1 1/2 bowl stainless steel sink	19 One designer single power point to	8 Quality aluminium sliding windows
54 Single towel rails and toilet	37 Quality mixer tap to kitchen sink	20 Electrical safety switch to mains	7 Cream or natural mortar with raked,
	38 Roller tracks to all kitchen drawers	21 Quality door furniture	6 Concrete roof tiles from builder's
	39 Quality stainless steel gas hotplate	22 Large capacity instantaneous hot	5 Extensive choice of clay face bricks
	40 Quality stainless steel electric	23 Garden taps to front and rear	4 Double clay brick construction
	41 Generous allowance for ceramic wall	24 Stormmaster gutters which prevent	3 R3.0 roof insulation
	42 1800 high tiling to showers with	25 Fully painted to the colour of your	2 Brickpaving to all external areas
	43 Floor tiles to bathroom and ensuite	26 Full connection to sewer within	1 Double garage with grano hardstand
	44 Exhaust fan to ensuite and kitchen	27 Obligation free, detailed	
	45 Mirrors with trim above all vanities	28 Fixed price contract	
	46 Privacy locks to bathrooms and wc	29 6 month Maintenance Agreement	
	47 Vanity cupboards under vanity tops,	30 Engineer designed concrete footings	
	fully lined	and floor slab	

The Sovereign Specification - The Fortitude

Quality and value for money  
 come as standard.



Illustration shown – The Fortitude Option 2

The Fortitude



The Fortitude Option 1

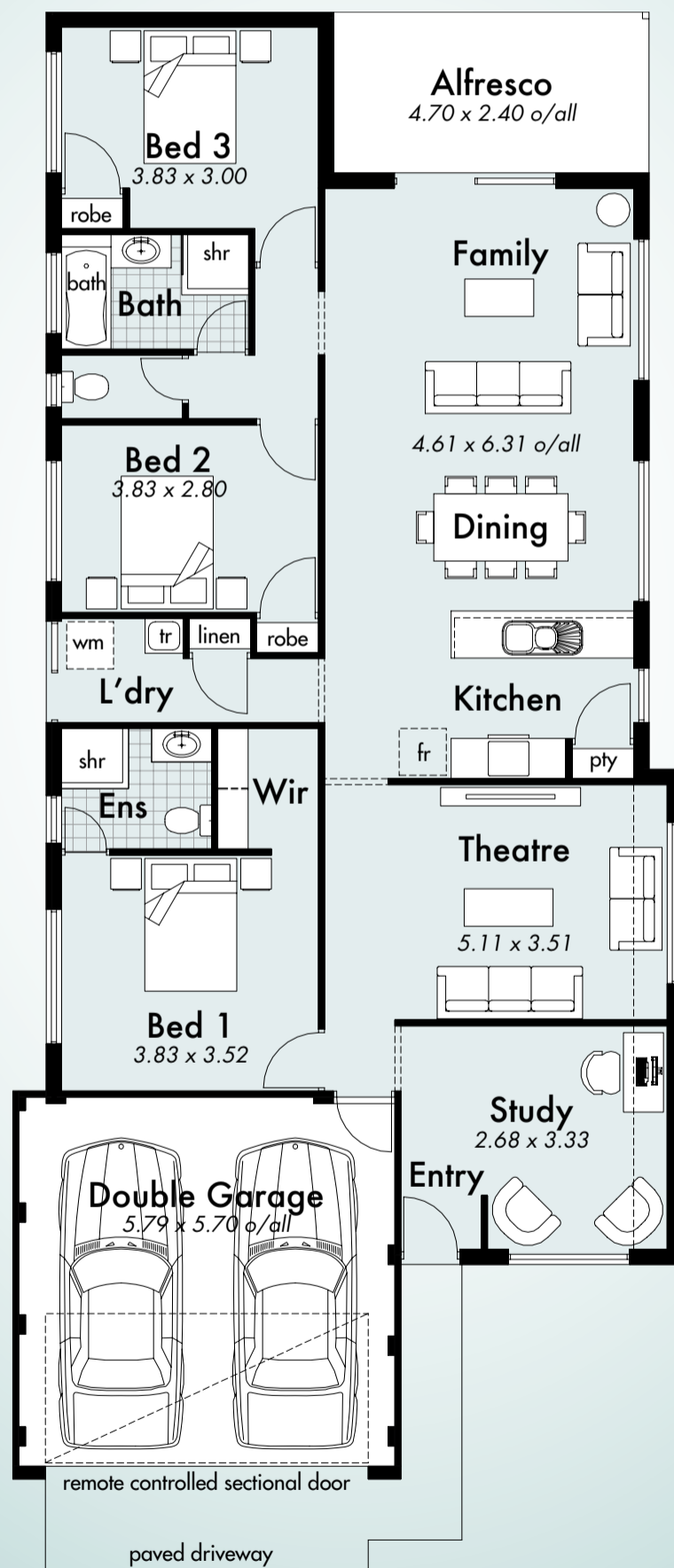


The Fortitude Standard Option

**House Areas**

House area	147.44m <sup>2</sup>	Perimeter	56.36m
Garage area	32.82m <sup>2</sup>	House width	9.99m
Alfresco area	11.28m <sup>2</sup>	House depth	21.89m
Total area	191.54m <sup>2</sup>		

At just under 10 metres wide the Fortitude is ideally suited to narrow lot living. Featuring 3 bedrooms and 2 bathrooms, study and spacious home theatre, plus a huge open plan kitchen, dining and family area that opens to a covered alfresco area. Finish it off with your choice of elevation – traditional or modern.



Call 9333 4010  
or visit [www.domain-homes.com.au](http://www.domain-homes.com.au)



The helpful builder