





The Destiny Option 1

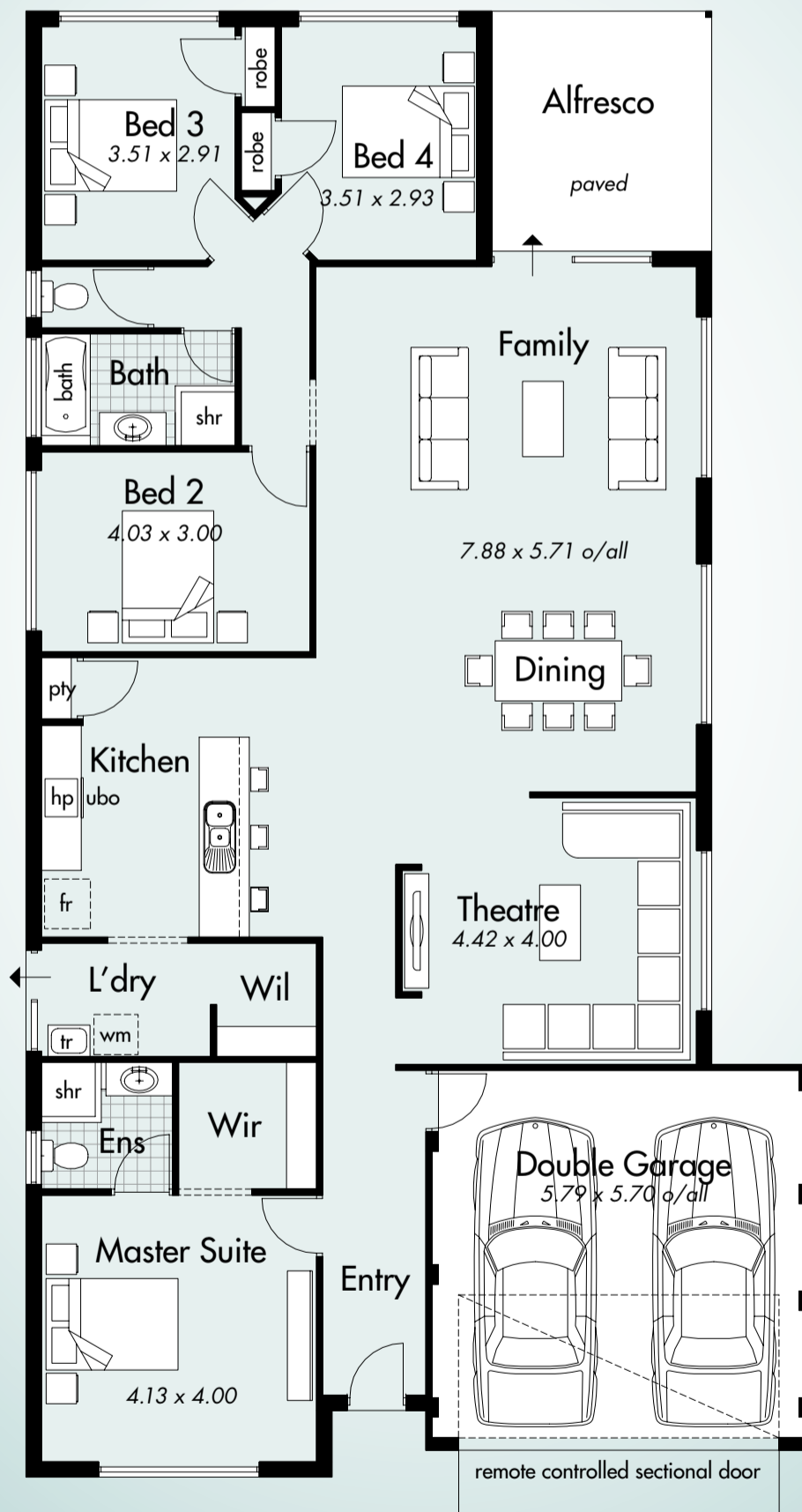


The Destiny Standard Option

**House Areas**

|            |                      |             |        |
|------------|----------------------|-------------|--------|
| House area | 187.40m <sup>2</sup> | Perimeter   | 64.56m |
| Garage     | 32.58m <sup>2</sup>  | House width | 11.79m |
| Alfresco   | 11.88m <sup>2</sup>  | House depth | 21.99m |
| Total area | 231.86m <sup>2</sup> |             |        |

Designed with open plan living in mind, the Destiny is ideally suited to narrow lot living. Featuring 4 bedrooms and 2 bathrooms, plus a galley-style kitchen that perfectly integrates with the dining, family and home theatre and opens to a covered alfresco area. Available in your choice of modern or traditional elevation, is Destiny calling you?



Call Metro on 9333 4040 or Southwest on 9780 9333  
or visit [www.domain-homes.com.au](http://www.domain-homes.com.au)



The helpful builder